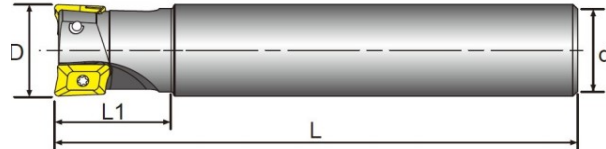
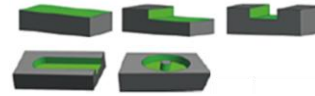


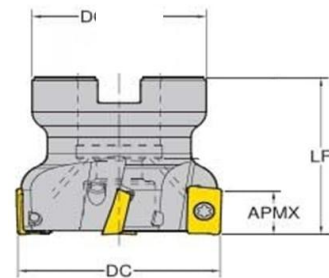
● **COPYING MILL 90 DEGREE**

**90DEGREE LEAD ANGLE INSERT 2 CORNER INSERT  
SUITABLE FOR POCKET MILLING, COPYING & SURFACING**



● **END MILL TYPE CUTTER**

ITEM DESCRIPTION	D	L1	L	d	Z	insert	SCREW
EAP300R-C16-16-150L-2T	16	25	150	16	2	APMT11	M2.5*8
EAP300R-C16-16-200L-2T	16	25	200	16	2	APMT11	
EAP300R-C20-20-150L-2T	20	30	150	20	2	APMT11	
EAP300R-C20-20-200L-2T	20	30	200	20	2	APMT11	
EAP300R-C25-25-150L-3T	25	35	150	25	3	APMT11	
EAP300R-C25-20-200L-3T	25	35	200	25	3	APMT11	
EAP300R-C32-32-200L-4T	32	40	200	32	4	APMT11	

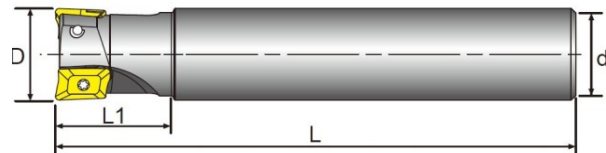
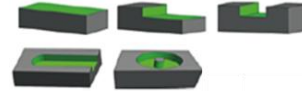


● **SHELL MILL CUTTER**

ITEM DESCRIPTION	DC	D	Z	APMX	insert	SCREW
EAP300R-40-22-5T	40	22	5	11	APMT 11	M2.5*8
EAP300R-50-22-6T	50	22	6	11	APMT 11	

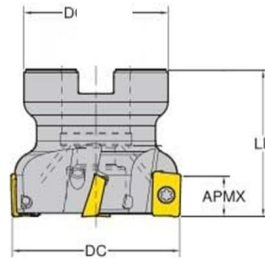
● **COPYING MILL 90 DEGREE**

**90DEGREE LEAD ANGLE INSERT 2 CORNER INSERT  
SUITABLE FOR POCKET MILLING, COPYING & SURFACING**



● **END MILL TYPE CUTTER**

ITEM DESCRIPTION	D	L1	L	d	Z	INSERT	SCREW
EAP400R-C25-25-150L-2T	25	30	150	25	2	APMT 16	M4*8
EAP400R-C25-25-200L-2T	25	30	200	25	2	APMT 16	
EAP400R-C32-32-150L-3T	32	30	150	32	3	APMT 16	
EAP400R-C32-32-200L-3T	32	40	200	32	3	APMT 16	

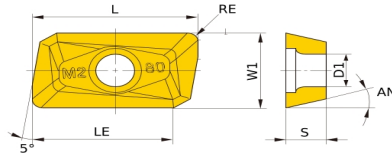


● **SHELL MILL CUTTER**

ITEM DESCRIPTION	DC	D	Z	APMX	INSERT	SCREW
EAP400R-40-22-4T	40	22	4	16	APMT 16	M4*8
EAP400R-50-22-5T	50	22	5	16	APMT 16	
EAP400R-63-22-6T	63	22	6	16	APMT 16	
EAP400R-80-27-7T	80	27	7	16	APMT 16	
EAP400R-100-32-6T	100	32	6	16	APMT 16	
EAP400R-125-40-8T	125	40	8	16	APMT 16	
EAP400R-160-40-8T	160	40	8	16	APMT 16	
EAP400R-200-60-10T	200	60	10	16	APMT 16	
EAP400R-250-60-11T	250	60	11	16	APMT 26	

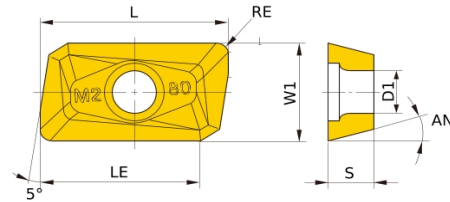
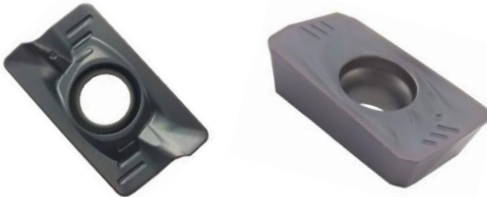
● **COPYING MILL INSERT 90 DEGREE**

**APMT MILLING INSERT**



ITEM DESCRIPTION	LE	S	d	R	AS1007	AS9030	AS7020	AL10
APMT 1135	12.24	3.6	2.8	0.8	●	●	●	●
APMT 160408	17.877	5.76	4.4	0.8	●	●	●	●

● **AXMT MILLING INSERT**



ITEM DESCRIPTION	LE	S	d	R	AS1007	AS9030	AS7020	AL10
AXMT 110304 PD	12.24	3.6	2.8	0.4	●	●	●	
AXMT 110308 PD	12.24	3.6	2.8	0.8	●	●	●	
AXMT 110312 PD	12.24	3.6	2.8	1.2	●	●	●	
AXMT 110316 PD	12.24	3.6	2.8	1.6	●	●	●	
AXMT 110320 PD	12.24	3.6	2.8	2	●	●	●	
AXMT 16T404 PD	17.877	5.76	4.4	0.4	●	●	●	
AXMT 16T408 PD	17.877	5.76	4.4	0.8	●	●	●	
AXMT 16T412 PD	17.877	5.76	4.4	1.2	●	●	●	
AXMT 16T416 PD	17.877	5.76	4.4	1.6	●	●	●	
AXMT 16T420 PD	17.877	5.76	4.4	2	●	●	●	
AXMT 16T424 PD	17.877	5.76	4.4	2.4	●	●	●	
AXMT 16T430 PD	17.877	5.76	4.4	3	●	●	●	
AXMT 16T440 PD	17.877	5.76	4.4	4	●	●	●	
AXMT 16T450 PD	17.877	5.76	4.4	5	●	●	●	

APMT/AXMT 11/16□□

## Recommended Cutting Conditions

ISO	Work Material	Grade	Ap (Max)	Cutting Speed Vc (m/min)	Feed Rate fz (mm/t)
P	Steel ( Carbon,Alloy,Mold)	AS9030	1	110-250	0.15-0.4
		AS1007			
		AS7020			
M	Staniless Steel Austenite,Ferrite,Martensite	AS9030	1	60-150	0.1-0.3
		AS1007			
		AS7020			
K	Cast Iron (Grey,Nodular,Ductile)	AS9030	1	100-250	0.15-1
		AS1007			
		AS7020			
S	High Tempeature Alloys (Ti,Ee,Ni & Co Based)	AS9030	1	40-80	0.06-0.2
		AS1007			
		AS7020			
H	Hardened Steel	AS7020	1	30-80	0.6-0.2