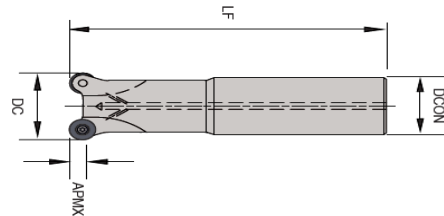
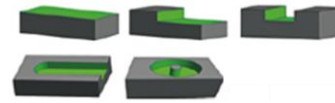


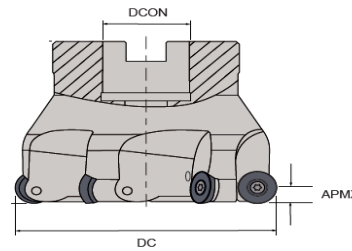
● **COPYING MILL R5**

**90DEGREE LEAD ANGLE INSERT 2 CORNER INSERT
SUITABLE FOR POCKET MILLING, COPYING & SURFACING**



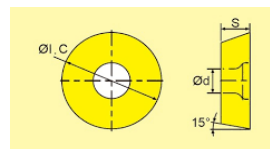
● **END MILL TYPE CUTTER**

ITEM DESCRIPTION	DC	L1	L	DCON	Z	insert
EMR-5R-C20-20-150-2T	20	30	150	20	2	RDKW 10
EMR-5R-C25-25-150-2T	25	30	150	25	3	RDKW 10
EMR-5R-C25-25-200-2T	25	40	200	25	3	RDKW 10
EMR-5R-C32-32-150-3T	32	45	150	32	3	RDKW 10
EMR-5R-C32-32-200-3T	32	45	200	32	3	RDKW 10



● **SHELL MILL CUTTER**

ITEM DESCRIPTION	DC	DCON	Z	insert	SCREW	KEY
EMR-5R-50-22-4T	50	22	4	RDKW 10	M2.5*6	T7
EMR-5R63-22-4T	63	22	4	RDKW 10	M2.5*6	T7
EMR-5R80-27-6T	80	27	6	RDKW 10	M2.5*6	T7
EMR-5R100-32-6T	100	32	6	RDKW 10	M2.5*6	T7

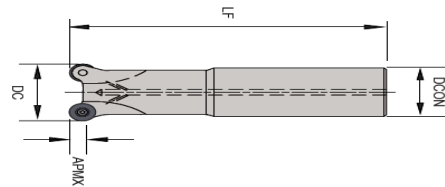
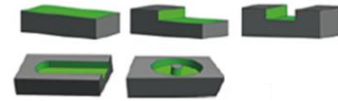


● **Insert**

ITEM DESCRIPTION	IC	S	d	R	AS1007	AS9030	AS7020	AL10
RDKW 1003 MO	10	3.18	3.9	5	●	●	●	●
RCMT 1003 MO	10	3.18	3.9	5	●	●	●	●

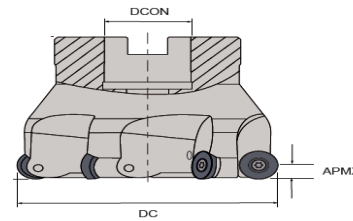
● **COPYING MILL R6**

**90DEGREE LEAD ANGLE INSERT 2 CORNER INSERT
SUITABLE FOR POCKET MILLING, COPYING & SURFACING**



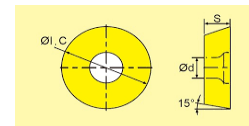
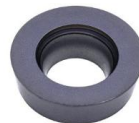
● **END MILL TYPE CUTTER**

ITEM DESCRIPTION	DC	L1	L	DCON	Z	insert	SCREW
ERP-6R-C25-25-150L-2T	25	30	150	25	2	RDMW12	M3.5
EMR-6R-C25-25-200-2T	25	40	200	25	2	RDMW12	M3.5
ERP-6R-C32-32-150-2T	32	30	150	32	2	RDMW12	M3.5
ERP-6R-C32-32-200-2T	32	0	200	32	2	RDMW12	M3.5



● **SHELL MILL CUTTER**

ITEM DESCRIPTION	DC	DCON	Z	insert	SCREW	KEY
EMRW (ERP) 6R-50-22-4T	50	22	4	RDKW 12	M4*10	T15
EMRW (ERP) 6R-52-22-4T	52	22	4	RDKW 12	M4*10	T15
EMRW (ERP) 6R-63-22-4T	63	22	4	RDKW 12	M4*10	T15
EMRW-(ERP) 6R80-27-6T	80	27	6	RDKW 12	M4*10	T15
EMRW (ERP) 6R-100-32-6T	100	32	6	RDKW 12	M4*10	T15
EMRW (ERP) 6R-125-40-7T	63	40	7	RDKW 16	M5*10	T20
EMRW (ERP) 6R-125-40-8T	80	40	8	RDKW 16	M5*10	T20
EMRW-(ERP) 6R200-60-10T	100	60	10	RDKW 16	M5*10	T20

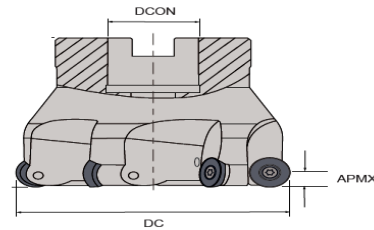
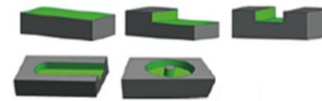


● **Insert**

ITEM DESCRIPTION	IC	S	d	R	AS1007	AS9030	AS7020	AL10
RDKW 12T3 MO	12	3.97	3.9	6	●	●	●	●

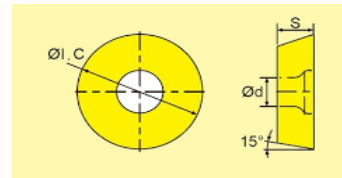
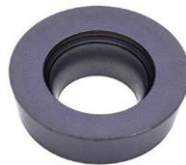
● **COPYING MILL R8**

**90DEGREE LEAD ANGLE INSERT 2 CORNER INSERT
SUITABLE FOR POCKET MILLING, COPYING & SURFACING**



● **SHELL MILL CUTTER**

ITEM DESCRIPTION	DC	DCON	Z	insert	SCREW	KEY
EMRW (ERP) 8R-63-22-4T	63	22	4	RDMW 16	M5	T20
EMRW-(ERP) 8R80-27-5T	80	27	5	RDMW 16	M5	T20
EMRW (ERP) 8R-100-32-6T	100	32	6	RDMW 16	M5	T20



● **Insert**

ITEM DESCRIPTION	IC	S	d	R	AS1007	AS9030	AS7020	AL10
RDMW 1604 MO	16	4.76	5.2	8	●	●	●	

R5/R6/R8□□

Recommended Cutting Conditions

ISO	Work Material	Grade	Ap (Max)	Cutting Speed Vc (m/min)	Feed Rate fz (mm/t)
P	Steel (Carbon,Alloy,Mold)	AS9030	1	110-250	0.15-0.5
		AS1007			
		AS7020			
M	Staniless Steel Austenite,Ferrite,Martensite	AS9030	1	60-150	0.15-0.4
		AS1007			
		AS7020			
K	Cast Iron (Grey,Nodular,Ductile)	AS9030	1	100-250	0.15-1
		AS1007			
		AS7020			
S	High Tempeature Alloys (Ti,Ee,Ni & Co Based)	AS9030	1	40-80	0.06-0.2
		AS1007			
		AS7020			
H	Hardened Steel	AS7020	1	30-80	0.6-0.2